

## THE IRRIGATED AREA OF ROMANIA, HOW IT EVOLVED AND WHAT CAPABILITIES EXIST FOR THE FUTURE

BĂNEȘ ADRIAN<sup>1</sup>, RAICOV MIROSLAV<sup>1\*</sup>, FEHER ANDREA<sup>1,2</sup>,  
ORBOI MANUELA-DORA<sup>2</sup>

<sup>1</sup>Romanian Academy - Timișoara Branch, 24 Mihai Viteazu Blv., 300223, Timiș, Timișoara

<sup>2</sup>University of Life Sciences "King Mihai I" from Timișoara, Faculty of Management and Rural Tourism, 119 Calea Aradului, 300645, Timis, Timisoara, Romania

\* Corresponding author's email: miroslav.raicov@academiattm.ro

**Abstract:** Romania has a wide variety of water resources, but these have a very high variability during the year, depending on the rainfall and provide a relatively low flow. The most important water resource for irrigation is the Danube River, the other inland rivers, summed up, barely rising to its level. Even if after 1989 Romania's irrigated area has steadily decreased, we have remained ahead of other countries in the region (such as Bulgaria, Serbia and Hungary). However, according to the scenarios presented in the paper, we still need at least 10 years to catch up with countries like France.

**Key words:** irrigated area, agricultural land, evolution, future capabilities

### INTRODUCTION

Effective water management is essential to ensure the sustainability of irrigation practices. This includes proper water allocation, efficient irrigation techniques, and measures to prevent water pollution and soil degradation. Despite its importance, irrigation in Romania faces challenges such as water scarcity, outdated infrastructure, and environmental concerns. Climate change also poses risks, potentially altering rainfall patterns and increasing the frequency of extreme weather events. Making efficient irrigation systems should be a maximum priority under current trend of desertification of large areas of Romania's area. [1]

Romania has a wide variety of fresh water resources, but they have a very high variability during the year, depending on the precipitation, ensuring either a relatively low flow or representing a flood hazard. Regarding precipitation, in recent years, it were rarely been sufficient and at the right time, most of the time we are faced with either periods of prolonged drought or a too high level of precipitation. As water resources for irrigation, the most important was and is the Danube River with a water volume of 85 billion cubic meters (of which approximately 30 are used) [15], the volumes of water offered by the other inland rivers, combined, rising almost at the same level. Inland rivers are supplied mainly from rains and snows, and less from underground springs, which leads to a high degree of fluctuation of the flows during the year, so with great dependence and vulnerability to seasonal climatic conditions. The hydrological resource is unevenly distributed on the country's territory having a large variation not only seasonal (annual) but also from year to year (multiannual) [3, 4].

At the national level, in the period before 1989, the irrigated area was about 3 million hectares, and currently the irrigated area is 1 million hectares, according to data from the National Agency for Land Improvements (ANIF). [16]

The modernization of irrigation systems, roads, processing facilities and other related areas are an essential part of making agriculture a profitable and desirable activity, representing the focus of the entire second pillar of the Common Agricultural Policy (CAP). [2]

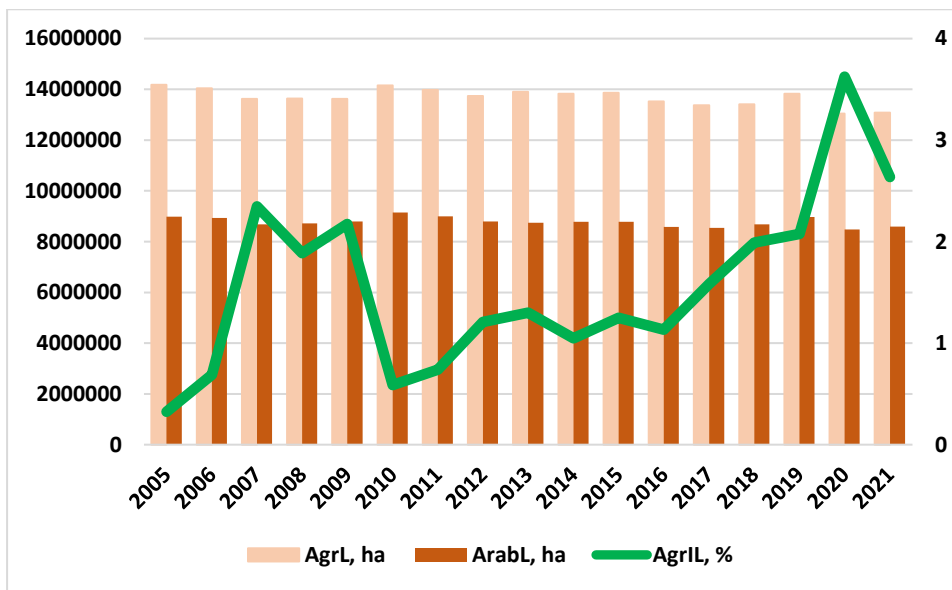
Overall, irrigation plays a crucial role in Romanian agriculture, helping to boost crop yields, enhance food security, and support rural livelihoods. However, addressing challenges such as water scarcity and environmental sustainability will be key to ensuring the long-term viability of irrigation systems in Romania.

**MATERIALS AND METHODS**

In this work, various data related to the irrigated land area from several European countries, including Romania, were retrieved, sorted and studied. Based on these data, were determined regression functions as close to reality as possible and then were made forecasts, in order to see the time interval required for Romania to reach a level of irrigated land comparable to that of developed countries.

**RESEARCH RESULTS**

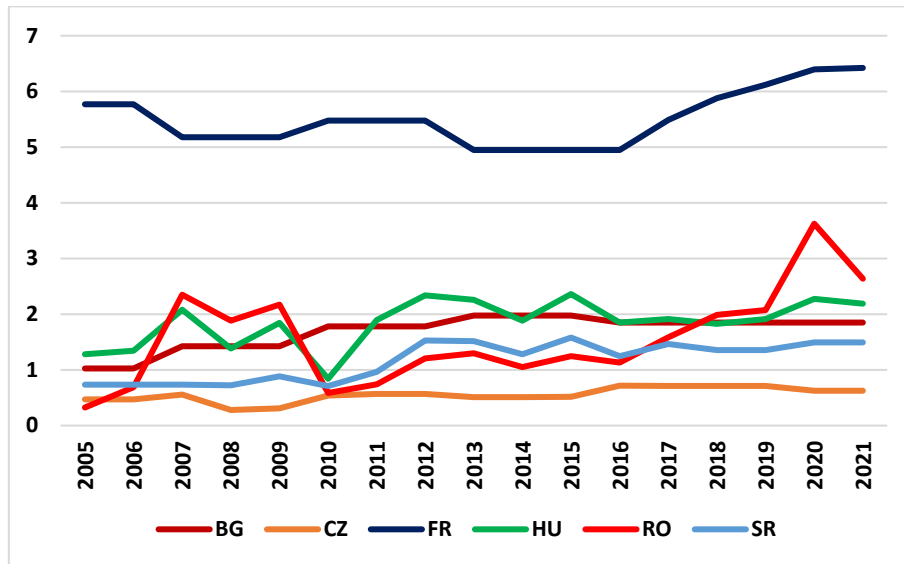
In the period 2005-2021, in Romania, both the agricultural and the arable area did not undergo significant changes, the agricultural area varying between 1.4 and 1.3 million hectares, and the arable area between 9.2 and 8.5 million hectares. The same cannot be said, in the specified period, about the irrigated agricultural area. The lowest value was approximately 0.33% in 2005, and the highest was 3.63% in 2020. Between these years, and even after, it recorded countless ups and downs, the only relatively constant period from the point of view of the trend (increasing) being the one between 2010-2020 (figure 1).



**Figure 1. The evolution of agricultural (ha), arable (ha) and irrigated agricultural land (%) in Romania, 2005-2021**

Source: Own calculations after [11]

However, data made available by the World Bank suggest that, in 2003, Romania had the highest percentage of irrigated agricultural area, compared to other countries in the region (Bulgaria and Hungary) with 3.84% of the agricultural area, while in Hungary the total irrigated area represented 2.54% and in Bulgaria the percentage was only 1.48%. Due to the poor funding of this domain, the situation changed dramatically, between year 2010 and 2016 Romania reaching below the profile indicator level from Bulgaria and Hungary. More specifically, in 10 years, we have reached from the position of regional leader in terms of irrigation (in 2003) to the penultimate position of the ranking, compared to the other countries in the region (in 2014). Practically, apart from a short lapse, from 2007 to 2009, only from 2017 we did start to climb the rankings (figure 2).



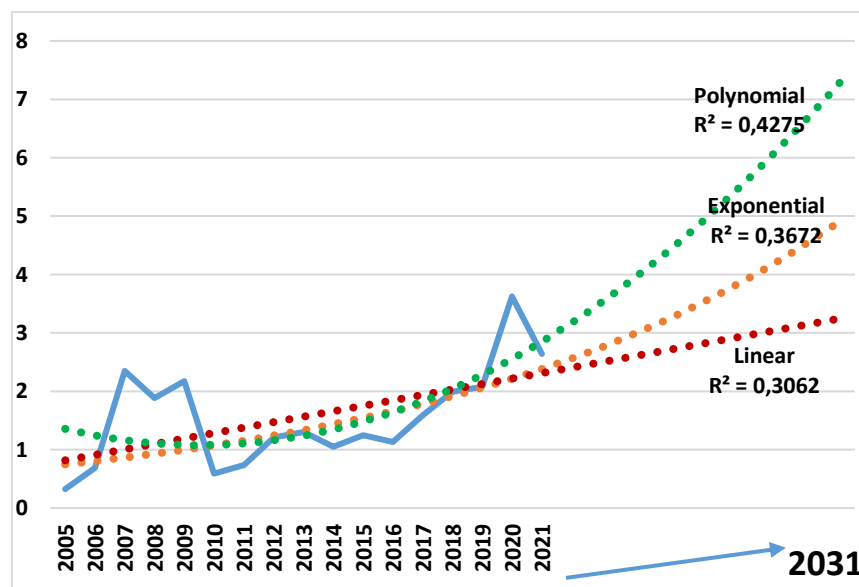
**Figure 2. Agricultural irrigated land (% of total agricultural land) in several European countries. World Development Indicators**

Source: Own calculations after [5,6,7 8,9,12,13,14]

According to the data presented previously, we are currently at the top of the countries in the similar region in terms of development, but other aspects must also be taken into account. Thus, for example, the Czech Republic is at the lowest level among the 5 countries, but unlike Romania, with an annual precipitation average of 580 mm/year (from 1990-2021), the average precipitation level is 677 mm/year (from 1993-2020) [10], i.e. almost 100 l/ sq m extra, so it does not need so many irrigations. Also, apart from Hungary (where a steep decrease was registered in 2010), all the countries considered have a relatively uniform trend of evolution (in general increase) of the irrigated area.

In Romania, due to the large variations from year to year in the irrigated areas, it is quite difficult to predict their evolution in the future.

However, we tried several scenarios (figure 3), to see if by the year 2031 (10 years from the last statistical data), we can get closer to the irrigated area of France (about 6.5%).



**Figure 3. Prediction models of the evolution of the irrigated area in the next 10 years**

In the first case, we tested a linear regression function, of the type  $y=a*x+b$ . This gave us a squared correlation coefficient ( $r^2$ ) of approximately 0.31. Taking into account that a value of  $r^2$  greater than 0.5, i.e. as close as possible to 1, shows us that the regression line approximates the real data quite correctly, we tried other models, in order to obtain a value as high as possible for this coefficient. Also, a linear growth is unlikely to be achieved in real life, but it was basically a test to see where we will be in 2031. Anyway, this growth model brings us to a value of just over 3.2% in 2031, that is, less than half of France's current value.

The second regression model was an exponential one, of the form  $y=a*e^{b*x}$ , where we obtained a higher  $r^2$  coefficient than in the previous case, namely almost 0.37. This model brings us to a value of almost 5% in 2031, much closer to the 6.5% that France has now.

Finally, since many evolutions can be approximated by polynomial functions, in the third case we used such a function, namely one of the 2nd degree, of the form  $y=a*x^2+b*x+c$ . With this model, we obtained an even higher  $r^2$ , of almost 0.43%, very close to that 0.5, which means a 50% chance of this happening. However, despite the rather high coefficient compared to the previous ones, it is unlikely that this prediction will be the real one, namely that in approximately 8-9 years we will reach the current level of France. This is also based on the fact that after 2020, Romania's trend was a decreasing one.

## CONCLUSIONS

The conclusion would be that the second model presented, the one based on an exponential curve, even if it has a smaller square root than the polynomial one, is the most likely to happen, or the evolution will be between the exponential and the linear.

However, this also depends on the solution of some existing weaknesses at the present time. The data studied showed us a series of weaknesses of the irrigation system in Romania, which directly and negatively affect the farmer, such as:

- due to the dependence of production on climatic conditions, which are more and more unpredictable and changeable, there is uncertainty and a high variability of earnings from agricultural activity;
- the old irrigation system is mostly destroyed and what is left from the period before 1989 is in poor conditions, is expensive to use and has little coverage of the agricultural area that need to be irrigated (those located in areas with drought or excessive drought);
- in the equipment of the farms there are no local weather systems for analyzing and storing information, which would provide a history of regional climate and environmental conditions and help in decision-making by farmers;
- low productivity and efficiency, low added value (especially for export), as well as the low prices of primary agricultural products lead to insufficient incomes and even to the abandonment of agricultural activity, especially by young people;
- reducing the share, or even giving up the use of native and adapted varieties in culture.

These attract a series of threats to the rural population and farmers and implicitly to agricultural production:

- the migration of the population from the rural area due to low incomes, the inefficiency of the activity in agriculture, the lack of support, the price policy that disadvantages the producer and encourages the intermediary, the insecurity and instability of incomes due to weather dependence
- the more and more visible climate changes, the accentuation of extreme phenomena, heatwaves, droughts, storms and precipitations, floods, etc., have led to the

worsening of favorable plant growth conditions, also having a negative effect on farmers' incomes.

In order to solve these problems, respectively for the expansion or rehabilitation of the irrigation infrastructure, a strategy for combining agricultural land is necessary, because there are no effective drip irrigation systems on 50 or 100 hectares. Also, in Romania there is a structural problem, because, in many places, the water is pushed from the valley to the hill in order to create mini-accumulation areas and which are only sustainable for the first two stages, not for five, six, seven pumping stages, as many as are provided. In addition, a short-term irrigation subsidy could help farmers accumulate capital, with which they can then build their own irrigation systems.

## REFERENCES

- [1]. **BĂNEȘ A., MATEOC-SÎRB NICOLETA, ORBOI MANUELA DORA**, 2016, Evolution of irrigated area and landscaped with soil erosion control in Romania in the 2007-2014 period, *Lucrări științifice. Management agricole*, 18(1)
- [2]. **COPĂCENARU OLIMPIA** coord, 2021, EO Clinic project: Estimating Irrigation Potential in Romania, Work Order Report, EOC0018\_WOR\_v2.0
- [3]. **OTIMAN P.I.**, 2019, *Viața Rurală românească pe lungul drum între flămânzi și Uniunea Europeană sau drama satului și a țăranului român într-un secol de iluzii, dezamăgiri și speranțe*, Ed. Academiei Române and Ed. ArtPress
- [4]. **RAICOV M., FEHER ANDREA, BĂNEȘ A., OTIMAN P.I.**, 2022, Possibilities for optimizing the irrigation system in Romania, Proceedings of the 5th ISCW, Szarvas, Hungary
- [5]. \*\*\* Agricultural land (sq. km) in Romania, Hungary, Serbia and Bulgaria, <https://data.worldbank.org/indicator/AG.LND.AGRI.K2?end=2021&locations=HU-RO-RS-BG&start=2005&view=chart>, Accessed on 24.02.2024
- [6]. \*\*\* Agricultural irrigated land (% of total agricultural land) - Hungary, Romania, Serbia, Bulgaria, <https://data.worldbank.org/indicator/AG.LND.IRIG.AG.ZS?end=2021&locations=HU-RO-RS-BG&start=2005&view=chart>, Accessed on 24.02.2024
- [7]. \*\*\* Agricultural irrigated land (% of total agricultural land) - Czechia, Spain, [https://data.worldbank.org/indicator/AG.LND.IRIG.AG.ZS?end=2020&locations=CZ-ES&name\\_desc=false&start=2007&view=chart](https://data.worldbank.org/indicator/AG.LND.IRIG.AG.ZS?end=2020&locations=CZ-ES&name_desc=false&start=2007&view=chart), Accessed on 24.02.2024
- [8]. \*\*\* Agricultural land (sq. km) - Czechia, Spain, [https://data.worldbank.org/indicator/AG.LND.AGRI.K2?end=2020&locations=CZ-ES&name\\_desc=false&start=2007&view=chart](https://data.worldbank.org/indicator/AG.LND.AGRI.K2?end=2020&locations=CZ-ES&name_desc=false&start=2007&view=chart), Accessed on 24.02.2024
- [9]. \*\*\* Arable land (hectares) - Bulgaria, Romania, Serbia, Hungary, Spain, Czechia, <https://data.worldbank.org/indicator/AG.LND.ARBL.HA?end=2021&locations=BG-RO-RS-HU-ES-CZ&start=2005&view=chart>, Accessed on 24.02.2024
- [10]. \*\*\* <https://www.ceicdata.com/en/czech-republic/environmental-land-use-protected-areas-and-national-wealth/cz-average-precipitation-in-depth>, Accessed on 12.12.2023
- [11]. \*\*\* <http://data.un.org/Data.aspx?d=FAO&f=itemCode%3A6690>, Accessed on 16.01.2024
- [12]. \*\*\* <https://data.worldbank.org/indicator/AG.LND.IRIG.AG.ZS?view=chart>, Accessed on 24.02.2024
- [13]. \*\*\* <https://data.worldbank.org/indicator/AG.LND.IRIG.AG.ZS?end=2021&locations=HU-RO-RS-BG&start=2005&view=chart>, Accessed on 24.02.2024

- [14]. \*\*\* [https://data.worldbank.org/indicator/AG.LND.IRIG.AG.ZS?end=2020&locations=CZ-ES&name\\_desc=false&start=2007&view=chart](https://data.worldbank.org/indicator/AG.LND.IRIG.AG.ZS?end=2020&locations=CZ-ES&name_desc=false&start=2007&view=chart), Accessed on 24.02.2024
- [15]. \*\*\* <http://starea-natiunii.ro/index.php/ro/noutati/facts-figures/25-facts-figures/161-romania-irigatii-insuficiente-pentru-o-agricultura-performanta-2>, 25.01.2024
- [16]. \*\*\* <https://www.zf.ro/zf-agropower/zf-agropower-2021-romania-ar-iriga-2-milioane-hectare-azi-20111566>, 25.01.2024