

## RESEARCHES REGARDING THE DEVELOPMENT OF MILK AND MILK PRODUCTS PRODUCTIONS IN ROMANIA

IENOVAN DANIELA<sup>1</sup>, PETROMAN CORNELIA<sup>1</sup>, PETROMAN I.<sup>1</sup>, MARIN DIANA<sup>1</sup>  
<sup>1</sup>USAMVBTimișoara, Faculty of Agricultural Management

**Abstract:** Analyzing the milk production collected at national level over the last two years, we can see an increase of 5.6%, meaning with 35388. In our country in the first 11 months from the year 2015 were imported three times as many dairy products as they exported, meaning we imported about 250 million euros and we exported the same products in value of only 85 million euros.

**Key words:** production, milk, dairy products, evolution

### INTRODUCTION

The raw material for the milk and dairy products industry is represented by the cow, sheep, goat, buffalo milk. Generally, by milk as a food is understand the cow's milk [2,5,9]. Milk from other species, buffalo, goat, sheep, etc. takes their name.

In terms of composition, milk is a well-defined mixture of water, lipids, lactose, protid, minerals, vitamins and other components[1,4,7,8]. It is the most complete and most readily assimilated food, being one of the basic foods in human nutrition [3,6].

Important is the fact that nutrients from milk are found in optimal quantities, so milk is assimilated to the body better than any other food, being eaten both fresh and in the form of different dairy products. Both milk and lactic products increase the body's resistance to infection and intoxication, raising the health level of the population.

### MATERIAL AND METHODS

In order to accomplish this scientific work, we have carried out statistical surveys on the milk and milk products obtained and exploited in our country, following their dynamics.

### RESEARCH RESULTS

Analyzing the amount of cow's milk collected by processing units during the last two years (2015-2016), there is an increase of 5.6%, meaning 35388 tons. The same situation is found in the case of dairy products, so in the case of cheese, there is an increase of 9.5%, meaning 5401 tons. If we refer to milk for consumption, there is an increase in production with 11282 tons, the production of cream increased with 6.5% and 2807 tons respectively, the butter registered an increase in production with 432 tons and the production of acidic dairy products increased with 5.1% respectively 6424 tons.

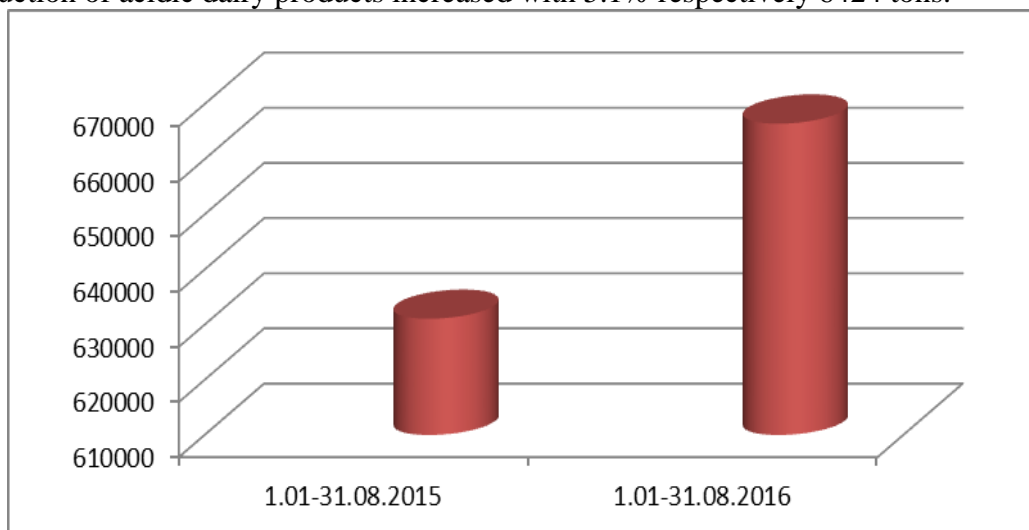
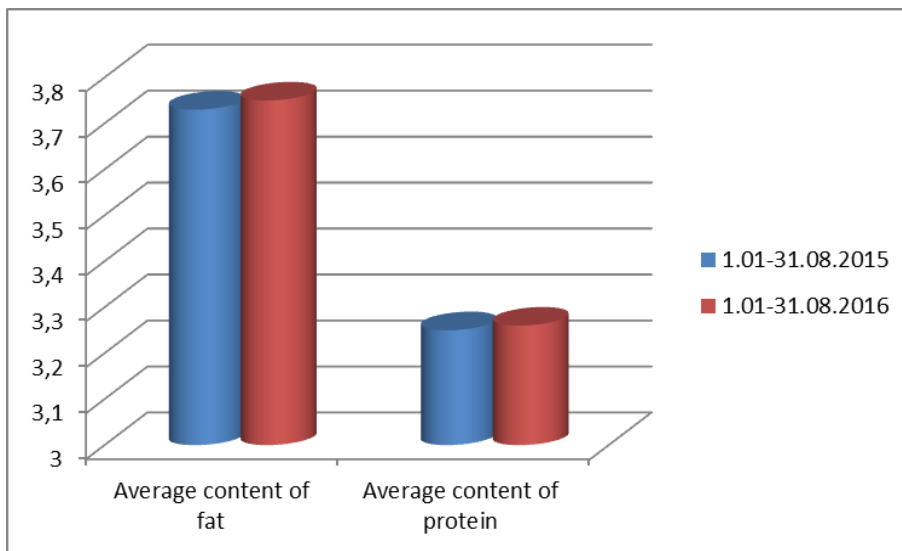


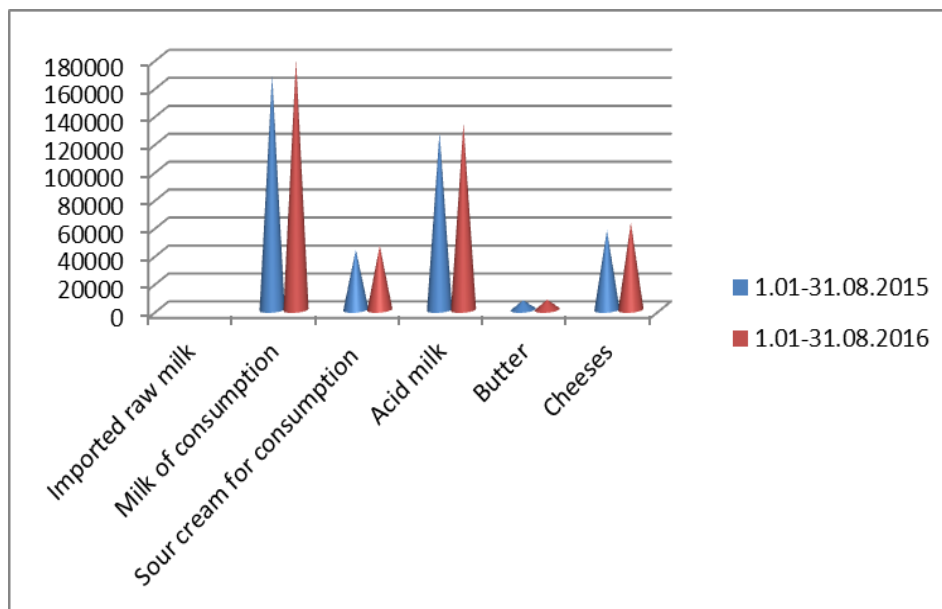
Figure 1. Cow's milk collected by processing units (tons)

Analyzing the amount of cow's milk collected by processing units in the years 2015 and 2016 there can be seen differences of 35388 tons, meaning an increase of 5.3 in 2016 compared to 2015.

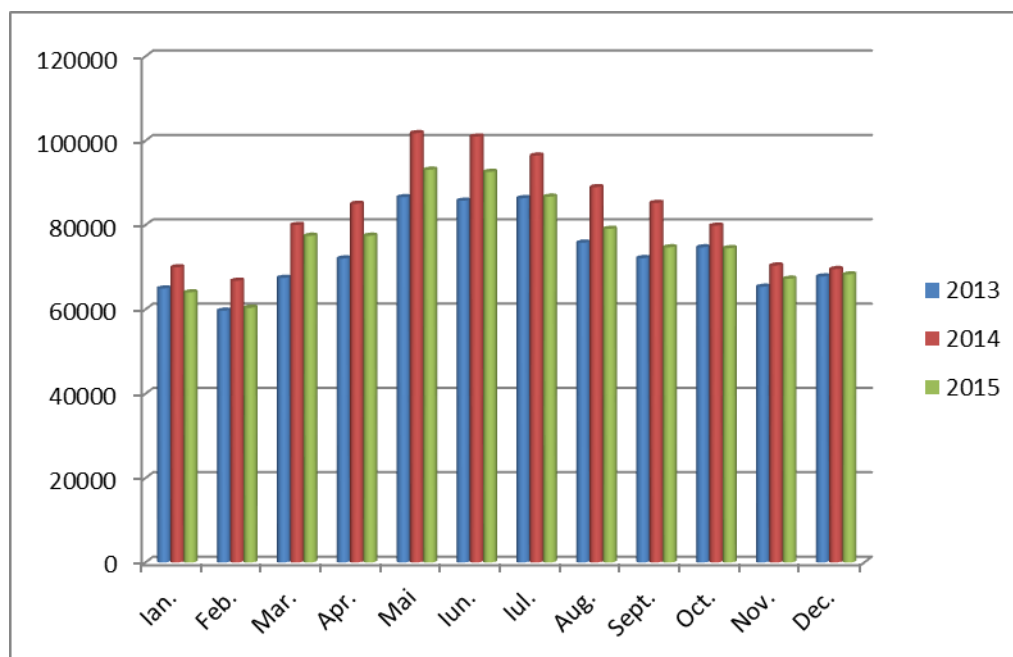


**Figure 2. Comparative analysis of the average content of fat and protein of cow's milk (%)**

Following the fat percentage of cow's milk collected during the two years, it can be seen that the milk was fatter with 0.02%, and the protein content also increased with 0.01%.



**Figure 3. Comparison of dairy products production (tons)**



**Figure 4. The evolution of the amount of cow's milk collected by processing units**

The quantity of imported raw milk increased in 2015 compared to 2014 with 22266 tons (+ 28.8%).

Romania has imported three times as many dairy products as it exported in the first 11 months of 2015, so it was imported milk, cream, yoghurt, butter, cheese and curd in the amount of approximately 250 million euro and has exported the same products in value of only 85 million euro, 2.9 times less, imports and exports that took place both inside and outside the EU.

In 2014 compared to the previous year, the amount of cow's milk purchased by processing units from agricultural holdings and collection centers increased with 114272 tons (+ 13.0%).

Quantities of raw milk processed from other species increased in 2014 compared to the previous year, the goat milk production stands out, in particular, with an increase of 110.8%.

The amount of imported raw milk has decreased in 2014 compared to 2013 with 19.5%.

In the year 2014, the production of the main dairy products showed an upward trend, with the largest increase at powder milk production with 1754 tons (+ 80.4%) compared to 2013.

Significant increases of production in the year 2014 compared to the previous year can be reported for: milk for consumption with 31437 tons, sower cream for consumption with 4904 tons, butter with 787 tons, cheese with 4177 tons.

## CONCLUSIONS

Before we show the importance of milk as a strategic product of the agro-food market, it is appropriate to emphasize, first, its biological importance. In fact, this explains why at all mammals milk serve as the vital feed of their babies. However, these nutritional qualities give the milk its economic importance on the agro-food market.

Increases of the production of the main dairy products in 2016 compared to 2015 can be mentioned in: sower cream for consumption with 2807 tons, cheeses, including the

quantity of cheese obtained exclusively from cow's milk with 5401 tons, butter with 432 tons, milk for consumption with 11282 tons.

#### REFERENCES

- [1]. **AVRAMESCU DANIELA, PETROMAN IOAN, AVRAM EUGENIU, PETROMAN CORNELIA, BĂLAN IOANA, IOSIM IASMINA, ORBOI MANUELA DORA, MARIN DIANA**, 2013, Quality of raw milk from different dairy farms, Journal of Food, Agriculture & Environment, ISSN 1459-0255; ISSN (electronic): 1459-0263, Vol.11, nr. 2, Pg. 267-269
- [2]. **AVRAMESCU DANIELA, PETROMAN I., PETROMAN C., MARIN DIANA , BĂLAN IOANA**, 2012, Relationship between age of sheep and quantity of milk, *Lucrări științifice Management Agricol*, ISSN 1453-1410, Seria 1, vol. XIV (2), pp. 533-536
- [3]. **BELA ANGELA, PETROMAN CORNELIA, MUNTEANU ȘTEFAN, PETROMAN I., MARIN DIANA, ȘUCAN MOISINA , SOUCA LAVINIA**, 2012, Impact of food additives and of food supplements on agro-alimentary produce, *Lucrări științifice Management Agricol*, ISSN 1453-1410, Seria 1, vol. XIV (2), pp. 399-406
- [4]. **BIDIREAC CRISTINA, PETROMAN CORNELIA, STEFANOVIC M., PETROMAN I., MARIN DIANA**, 2014, Study on the factors influencing cow milk production in Dairy cows, *Lucrări științifice Management Agricol*, ISSN 1453-1410, Seria 1, vol. XVI (2), pp. 202-205
- [5]. **GEORGESCU GHE.**, 2000, *Lapte și produse lactate*, Ed. Ceres, București
- [6]. **MARIN DIANA**, 2015, Research Regarding the Purchase Decision Process of Consumer of Food Products, *Lucrări Științifice, Zootehnie și Biotehnologii*, ISSN print 1841-9364, ISSN online 2344- 4576, ISSN-L 1841-9364, vol. 48 (1), pp. 328-332
- [7]. **PETROMAN CORNELIA, PETROMAN IOAN, IVAȘCU GABRIELA, MARIN DIANA, COMAN ȘTEFAN, ȘUCAN MOISINA**, 2011, Dynamics of the Ecological Agroalimentary Produce Market, *Lucrări științifice Management agricol*, ISSN 1453-1410, seria I, vol. XIII (2), pp. 479-481
- [8]. **PETROMAN CORNELIA**, 2010, *Procesarea materiilor prime agricole*, Editura Eurostampa, Timisoara
- [9]. **TOMA C., MELEGHI E.**, 1975, *Tehnologia laptelui și a produselor lactate*, Editura Didactică și Pedagogică, București
- [10]. Anuarul statistic al României