

**ANALYSIS OF NATURAL AND ANTHROPIC RESOURCES IN POGĂNIȘ
MEADOW IN A VIEW OF THE DEVELOPMENT OF TOURISM AND THE
LOCAL ECONOMY**

TĂTARU (CRAINIC) DANIELA¹, BACIU CRISTINA², MATEOC- SÎRB NICOLETA^{1*}

*¹Banat's University of Agricultural Sciences and Veterinary Medicine "King Michael I of
Romania" from Timisoara, Romania*

²State Agrarian University of Moldova, Faculty of Economics, Chișinău, Republic of Moldova

**Corresponding author's e-mail: nicoletamateocsirb@usab-tm.ro*

***Abstract** Community development is the process by which a community improves its living conditions, through the voluntary, conscious, and planned activities of its members, based on the development of its own capacities for action, inter and extra-community connections, common values, and use of internal and external resources. Community development, therefore, covers all dimensions of development, economic, social, spatial, and sustainable. To these can be added the cultural dimension, respect for cultural specificity, the assumption of identity-based on traditional elements, and the expression of cultural features, awareness of uniqueness in the wider cultural context. Starting from these considerations, the authors of the article present the main natural and anthropic resources of the Pogăniș Meadow, which are important elements for the development of the local economies of the villages in this area. As working methods were used: observation, data collection, analysis. The "Focus-group" method was also used, based on discussions with formal and informal leaders of rural communities, after which we obtained information/opinions related to various issues in the area and based on which we synthesized proposals and actions that put in practice it could contribute to the development of the economies of those communities.*

Key word: *natural resources, potential, tourism Pogăniș area*

INTRODUCTION

Development cannot be conceived without the resources it needs. Three categories of resources compete in varying proportions in the development process: financial resources, material resources, and human resources [3,4,5].

The category of financial resources includes budgets as financial instruments and their constitution, investment funds and community funds, loans, and credit instruments from banks.

Material resources consist of the richness of the soil and subsoil, water, in quantitative and qualitative terms, air, forests and the quality of the environment in general, heritage (real estate, culture), and infrastructure (transport, utilities, communications networks) [1,2,11].

The human resource is the most dynamic of all types of resources because, on the one hand, it has the greatest development potential, and on the other hand, it can enhance the other resources, provided that it is correctly allocated. To these resources can be added the political systems (political structures, laws, political culture) which ensure the leadership, organization, functioning of society, and control [5,7,10,14].

The term community can be found in various situations: local community, village, city, town, region, community or ethnic group, religious community, the scientific community, academia, business community, virtual community, the international community. Therefore, a clarification, a generic definition, would be required, meant to cover this whole variety, but this approach is not always easy, as communities represent groups of people that cannot be classified a priority.

Sometimes they can be relevant at the local level (village, neighborhood), or at the regional or international level [15]. The community cannot be qualified as strictly

professional, political, religious, cultural, ethnic [6], according to the distinction (Maffesoli) between sociability (seen as the set of roles played by people) and social in the strict sense (the function of the individual in society). cover one or more of these dimensions (for example, “Association of Greek Catholic Teachers in Năsăud”, “Association of Romanian Poets in the Diaspora”, “Association of Cooperative Economists”) [8].

Community is a specific configuration of social connections, framed contextually, spatially, and temporally. A community can only make sense if its members, or at least some of them, consciously claim to belong to the group, but not if it is defined from the outside, without the consent of the people concerned.

According to James L. Mercer, the community is "a functional group of individuals, who live in a certain geographical area at a given time, have a common culture are arranged in a social structure and express an awareness of their uniqueness, as well as an identity separate from the group" [9].

MATERIALS AND METHODS

As working methods were used: observation, data collection, analysis. The “Focus-group” method was also used, based on discussions with formal and informal leaders of rural communities, after which we obtained information/opinions related to various issues in the area and based on which we synthesized proposals and actions that put in practice it could contribute to the development of the economies of those communities.

RESEARCH RESULTS

Lunca Pogănişului (Lunca Pogăniciului) is a protected area of national interest that corresponds to category IV IUCN (botanical nature reserve) located in Timiș County, on the administrative territory of the communes Sacoșu Turcesc, Nitchidorf and Tormac, only 27 km from Timișoara. It was established in 1974 and officially declared in 2000.

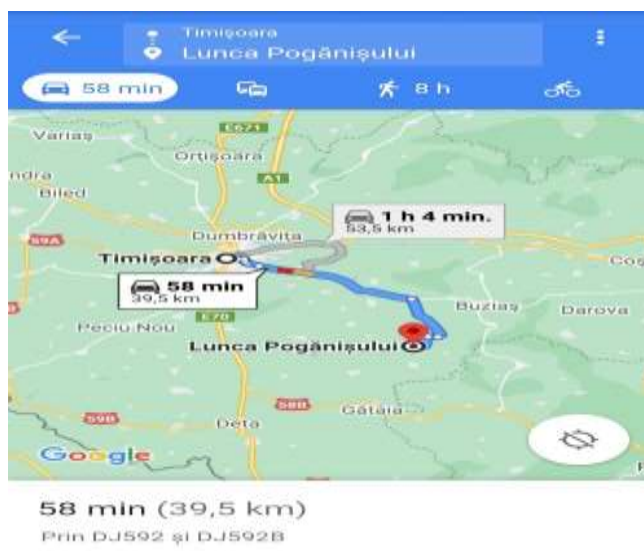


Figure 1. Road map

Source: Google map

The natural area with 75.50 hectares is located in the central part of Timiș County, in the basin of Pogăniș Valley (left tributary of the Timiș River), near the county road (DJ592A).

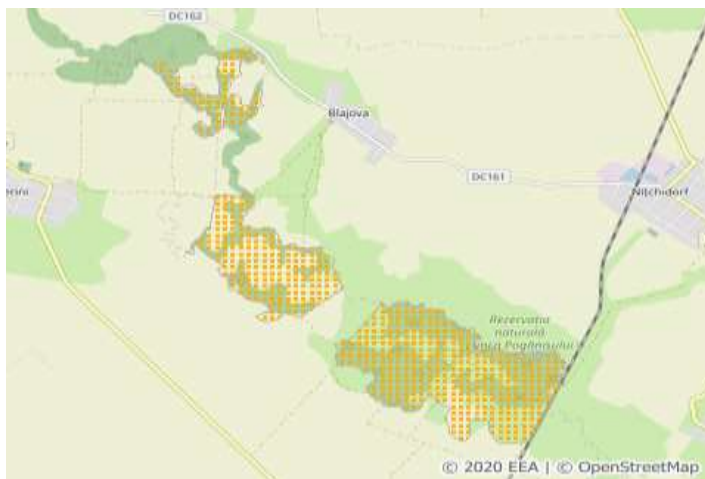


Figure 2. Pogăniș Meadow

Source: <https://eunis.eea.europa.eu/sites/183943>, [14]

The nature reserve was declared a protected area by Law No. 5 of March 6, 2000 (on the approval of the National Spatial Planning Plan - Section III - protected areas) and is an area in the Pogăniș river basin, covered by clusters of trees with specimens: Oak (*Quercus robur*), Field Maple (*Acer campestre*), Ash (*Fraxinus excelsior* L.), Field Elm (*Ulmus foliacea*), hornbeam (*Carpinus betulus*), European wild pear (*Pyrus pyraster*), wild apple (*Malus sylvestris*) and shrubs with blood species (*Cornus sanguinea*), Blackthorn (*Prunus spinosa*), Common hawthorn (*Crataegus monogyna*) or Tatarian maple (*Acer tataricum*).

The natural area protects, through the Bern Convention, a rare floristic species, known under the popular name of the variegated tulip (*Fritillaria meleagris*), a rare plant, but native to Eurasia.



Figure 3. Fritillaria Meleagris(the Variegated Tulip)

Source: Wikipedia, [13]

All we know about rural space is- this space is the root of a nation. From there comes the traditions, the customs, the whole culture start.

Pogănișu Meadow is an extraordinarily beautiful area that cannot be described in words, it is more than necessary to visit it. The source of Pogăniș River is from the Semenice Mountains, in the commune of Brebu, crosses two counties (Caraș Severin and Timiș), and flows into the Timiș River. Pogăniș Meadow is located on the territories of Tormac, Berini (common Sacoșu Turcesc), and Blajova (common Nițhidorf).



Figure. 4. Pogăniș River

Source: personal archive

The relief is high plain combined with low plain. The alternations of the relief forms, as well as the accentuated interpenetrations of the two categories of plains, give rise to relief microforms such as plates, ridges, micro-depressions, undulations, dead arms, and meanders. As in the past, following the massive waterfalls, the Pogăniș River often came out of the riverbed, the vegetation grown on the river bank was allowed to grow, thus creating a natural dam. After the Turkish invasion these forests were cut down, thus opening a new period of floods that led to the formation of swamps in the area, but under the rule of the Austro-Hungarian Empire, a series of land improvement works were carried out, the traces of which it is preserved to this day as dams and drains. Today, Pogăniș Meadow is not managed by any state authority, the landowners have also own portions of the forests on the bank of Pogăniș [12].



Figure. 5. Trees from Pogăniș Meadow

Source: personal archive

Over time, many trees have been allowed to grow by the owners, so that they can be cut and used for heating in the winter. What's sad is that they cut more than necessary for the sale. Without control over the reservation, cutting down excessively, not just the owners, and clearing almost the entire area covered by trees.



Figure 6. Thefts of secular trees from Pogăniș Meadow (from own property)

Source: personal archive

As a result of these deforestations, several species of flowers have either disappeared or are seen less often, especially the variegated tulip, which is the symbol of this area.



Figure 7. Model of Variegated Tulip on the houses from Berini village, Timiș county

Source: personal archive

In addition to the existing tourist potential, but still, in the unborn phase, there is a real heritage that lies in the homes of those who form the community of Berini. The lack of authorities to get involved in the life of the communities and the total disinterest towards the people living here, towards education, culture, made Sacoșu Turcesc remain anchored in the 1970s. Without a road infrastructure, the villages belonging to the commune have roads covered with stones, without a development strategy at the level of local administration, the commune remained in the last places.



Figure 8. Impracticable roads from Sacoșu Turcesc village

Source: personal archive-Claudiu Ilie, citizen

The year 2015 brings to the attention of all the inhabitants an event dedicated to the folk costumes from the Berini community, an event that intends to promote the whole area. Pogăniș Meadow Association is the first entity that organizes, after an interruption of cultural activities of approximately 30 years, such an event that highlights the invaluable heritage that this community has.

After long observations and discussions with the collectors from the village, with the people from the community, the president of the association decides that there is no time to lose, that each of those who live in the village have a moral obligation to carry on what they have, left their estates and ancestors a precious legacy. And how can it be passed on, through whom? Through children and young people. So, with the help of the community, young people and children, in particular, the event called "Mândru-i portu dân bătrâni" – How beautiful is old costumes was held.



Figure 9. Activities of Pogăniș Meadow NGO

Source: personal archive



Figure 10. The first edition of event – "Mândru-i portu dân bătrâni"

Source: personal archive

Three editions in which prominent writers, historians, poets, instrumentalists, vocal soloists, dance ensembles, and many, many participants were invited. Such events have not been organized for a long time attracting the public like a magnet. For several hours the streets of the village of Berini were filled with people, visitors. The name of the village of Berini and of the entire heritage that lies here was even mentioned in the European Parliament in Brussels by Mr. Mircea Diaconu, MEP (Member of the European Parliament), being invited to the first edition of the event.

There are initiatives of communities, of NGOs (non-governmental organizations), initiatives that can lead to the development of tourism in the area of Pogăniș Meadow, from tourism development to economic, social development.

A step has been taken towards community development which is so much needed in any community in Romania, to prosper. These events in the village of Berini have led to almost non-existent cohesion.

Rural livelihoods are improved through the effective participation of the rural population and rural communities to manage their own social, economic and environmental goals by empowering people in rural areas, especially women and young people, including through organizations such as local cooperatives and applying the top approach. Tight economic integration of rural areas with neighboring urban areas and the creation of rural jobs outside farms can reduce rural-urban disparities, expand opportunities and encourage the retention of skilled people, including young people, in rural areas. There is considerable potential for job creation in rural areas not only in agriculture, agri-food processing, and rural industry but also in building rural infrastructure, sustainable management of natural resources, waste, and residues. The concept of integrated rural development was developed in the early 1970s in the context of FAO (Food and

Agriculture Organization) concerns for developing countries, is defined as a set of public and non-governmental measures to expand and facilitate the adoption of modern techniques in rural areas. The concept of integrated rural development was expressed at the Cork Conference "Rural Europe-Future Perspectives" in Ireland in 1996, a conference that aimed to outline a rural development strategy for the period from the year 2000, which promotes the types of rural potential.

Among the ideas issued were those related to research, a basic tool in rural development, the involvement of key actors not only in the preparation, implementation, and development of projects but also in their monitoring and evaluation. Rural communities in developing countries still face challenges related to access to basic services, economic opportunities, and a degree of inconsistency in planning related to the rural-urban divide. Investments in environmental protection, rural infrastructure, and health, and rural education are essential for sustainable rural development and can enhance national well-being.

CONCLUSIONS

From the analysis of the data collected on the occasion of the research carried out in the field, we have synthesized several proposals that would contribute to the development of tourism in Pogăniș Meadow in particular but also of the local economy in general:

- practicable roads to the meadow;
- highlighting canals and rivers-navigation, walks on their side, an arrangement of alleys and bike lanes;
- arranging a camp for children and young people in the meadow, in partnership with the Romanian Scouts;
- arranging a museum in each village, with spaces for socializing, where local people and tourists can meet;
- setting up a Folk School-identifying crafts and creating a local brand, workshops for children, young people, and adults;
- partnerships with the Mihai Eminescu Theater and the Romanian Opera Timișoara;
- re-establishment of local choirs, the establishment of a dance ensemble;
- movie and performance hall;
- bank headquarters
- post
- gym, gymnastics - offering all the conditions for young people not to leave rural areas;
- establishment of the Local Youth Council
- the village day that could coincide with the village prayer (Rugă), an event that would mark a real celebration for the locals of the communities, a day that would bring together all the family members "at home", not fairs as they have been done in recent years.
- establishment of a "Day Center-Archangel Michael". A Day Center for both children and young people from rural areas and from families at social risk, as well as for their parents. The creation of this type of center aims to facilitate the access of these vulnerable groups to medical and social services. They will be provided with counseling, therapy, and education services in the context of all their rights, medical consultations. The objectives are combating juvenile delinquency, education against violence, various courses to be integrated into the labor market, occupational workshops, civic education activities, disease prevention, information, education, and

awareness of beneficiaries on the importance of hygiene, health, obtaining services social - preparation of birth certificates or identity cards, registration with family doctors, social integration. There will be specialists: social workers, doctors, psychologists, mediators, teachers, volunteers. There are a large number of people from the Roma community on the territory of the commune.

REFERENCES

- [1]. **BRÎNZAN OANA, MARIAN DRAGOI, DALIA BOCIORT, EUGENIA ȚIGAN, NICOLETA MATEOC-SÎRB, MONICA LUNGU**, 2020, A Market-Based Economic Instrument to Better Use Water in Agriculture, Sustainability, Vol.12, Issue 4; doi 10.3390/su12041473
- [2]. **DAVID SAIDA FEIER, MATEOC-SÎRB NICOLETA, MATEOC, T., BACAU CRISTINA-VIORICA, COPCEA ANISOARA DUMA, MIHUT CASIANA**, 2020 Agriculture and sustainable soil use in Timis county, Romania, Scientific Papers Series Management, Economic Engineering in Agriculture and Rural Development, Volume 20, Issue 1, pp 207-214
- [3]. **GAVRILESCU CAMELIA, FLOREA ADINA DAVID SAIDA, POPESCU ALIN, MATEOC-SIRB NICOLETA**, 2016 Agri-food organic products – A fast increasing market, Journal of Biotechnology 231S S4–S109 <http://dx.doi.org/10.1016/j.jbiotec.2016.05.333>, 2016
- [4]. **MAN TEODOR EUGEN, MATEOC-SÎRB NICOLETA**, 2007, Dezvoltarea rurală și regională durabilă a satului românesc, Editura Politehnica, Timișoara
- [5]. **MATEOC-SÎRB NICOLETA, MĂNESCU CAMELIA**, 2012, Dezvoltare rurală și organizarea teritoriului, Editura Mirton, Timișoara
- [6]. **MATEOC-SÎRB, N., TOMA, I. I., BLAGA, D., RAICOV, M., CHETRINESCU, M., & PEȚ, E.** 2010. Rural development and the preservation of cultural heritage, *Lucrari Stiintifice Management Agricol*, 12(1) pp. 1-6
- [7]. **MĂNESCU CAMELIA MARIA, MATEOC TEODOR, FLOREA ADINA NICOLETA, MATEOC-SÎRB NICOLETA**, 2017, Evolution of cultivated areas and yield in the main crops in Romania, *Lucrări științifice Management Agricol, Seria I*, vol. XIX (3), pp. 299-304
- [8]. **RUSALI MIRELA-ADRIANA**, 2014, Dezvoltarea economică a ruralului în România. Concepte și evaluări, Editura Digital Data Cluj, Cluj Napoca
- [9]. **MERCER J. L., BLAINE E**, 1956 *The American Community*. New York, Random House.
- [10]. **MAN TEODOR EUGEN, MATEOC-SÎRB NICOLETA**, 2007, Dezvoltarea rurală și regională durabilă a satului românesc, Editura Politehnica, Timișoara
- [11]. ***Strategia Națională pentru Dezvoltarea Durabilă a României Orizonturi 2013-2020-2030
- [12]. ***Raport județean privind starea mediului 2017 – Județul Timiș – Agenția pentru Protecția Mediului Timiș
- [13]. *** Wikipedia-https://ro.wikipedia.org/wiki/Lunca_Pogănișului
- [14]. *** <https://eunis.eea.europa.eu/sites/183943>
- [15]. *** Strategia Națională pentru Dezvoltarea Durabilă a României 2030